

accessories

Control Module

The control module remotely switches pumps without controls and can be used in both positive and negative plumbing systems. The module incorporates run dry protection.

Complete with built in non-return valve, the units logic control senses either a pressure drop, or minimum flow of 1 lpm to automatically start the pump.

Should the supply become restricted or run-out then the control module will sense this and stop the pump to avoid damage.

Each mode of operation is indicated on the control panel.

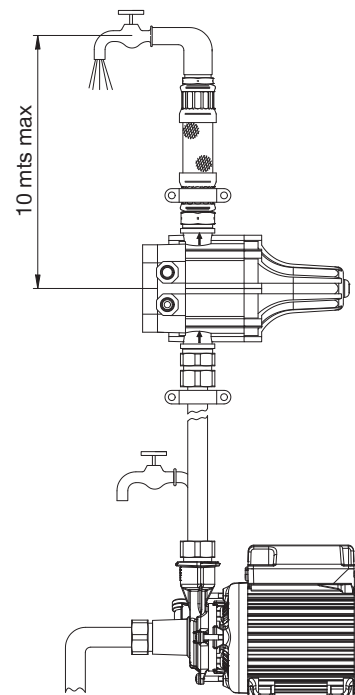


Features

- Automatically controls the pump
- Dry run pump protection
- LED indication of function
- Easy to install
- Manual restart button
- Integral non-return valve
- Safety valve
- IP65 construction

Application

- Automated pump switching in storage tank fill control and water supply delivery systems.

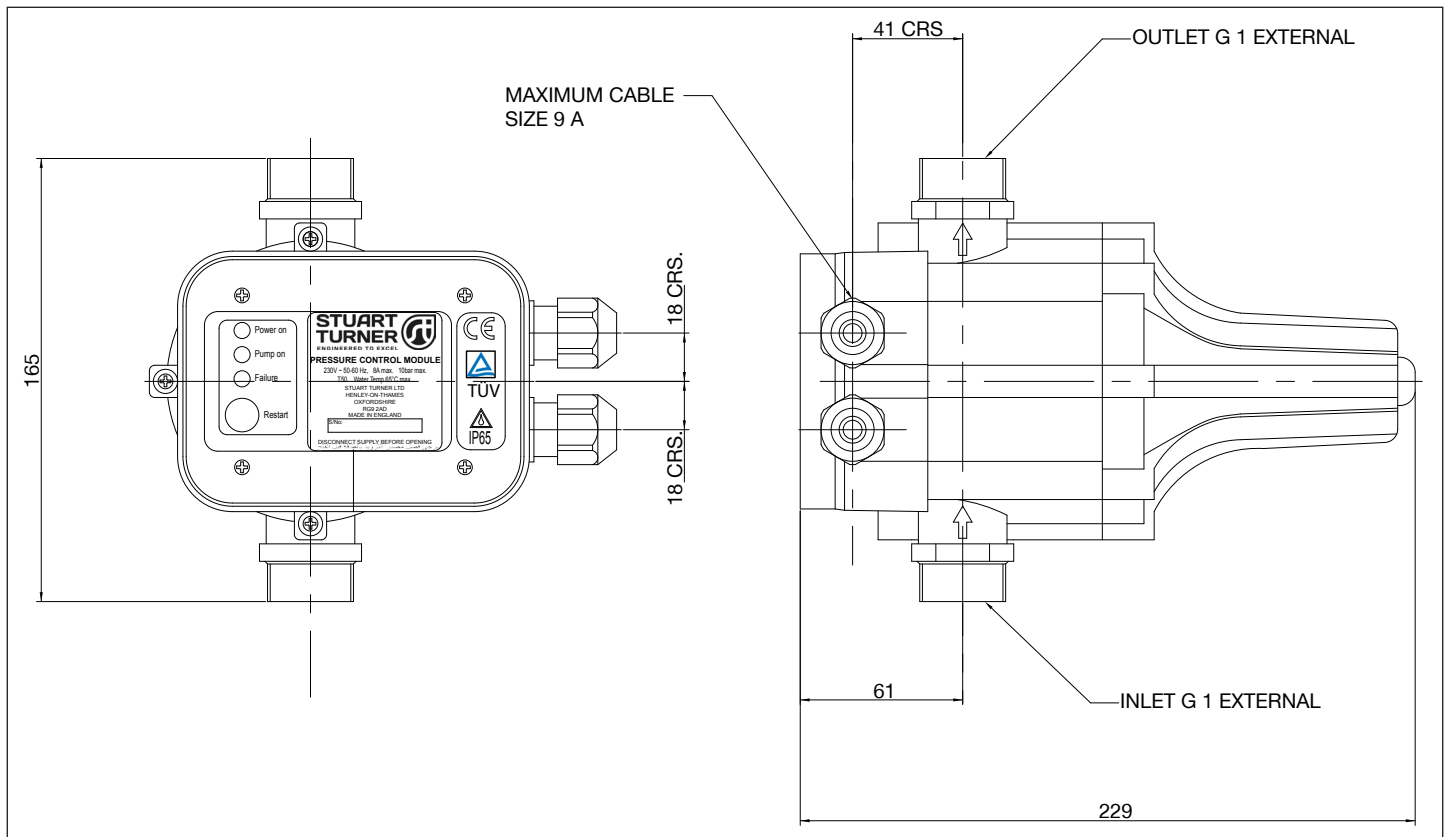


accessories

Pump Model		Control Module 41011 50 Hz / 60 Hz
General	Guarantee	1 year
Features	Run on Timer	3 sec
	Dry run protection	✓
Performance	Maximum liquid temperature**	65 °C
	Minimum liquid temperature	4 °C
	Maximum flow	120 l/min
	Cut in pressure	1.5 bar
	Maximum working pressure*	1000 kPa (10 bar)
	Maximum ambient air temperature	50 °C
	Flow switch sensitivity (approx)	1 l/min
Connections	Connections	G 1 male
Electrical	Power supply / phase / frequency	230 V a.c. \ 1 \ 50 Hz 220 V a.c. \ 1 \ 60 Hz
	Current (full load)	8 Amps
Physical	Enclosure protection	IP65
	Height (from inlet to outlet)	165 mm
	Weight (including fittings)	1.15 Kg

* The maximum pressure that can be applied to the pump under any installation conditions.

** A stored water temperature of 60 °C is considered sufficient to meet all normal requirements and will minimise deposition of scale in hard water areas.



Stuart Turner Limited reserves the right to amend specifications without notice.